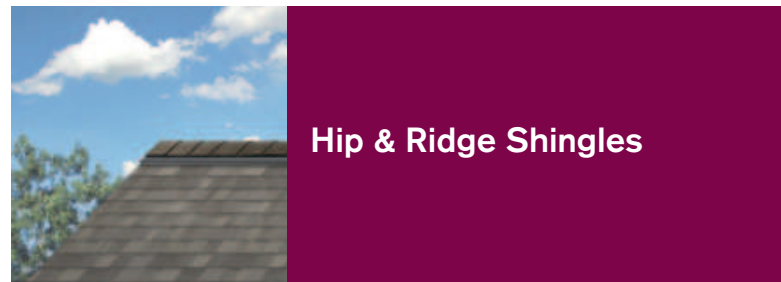


## The most important piece? Peace of mind.

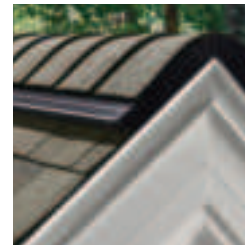
Homeowners count on you for assurance that their roof will provide strength and beauty for many years to come. You can count on us. That's because every Owens Corning™ roofing product – from the components that make up our Total Protection Roofing System™<sup>^</sup> to the accessories that support it – is manufactured to the highest quality and engineered to work together. So you can rest assured that every roof you build will build confidence in your business.



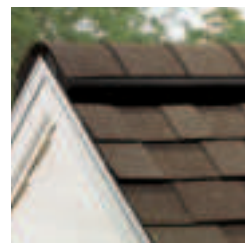
- DecoRidge® Hip & Ridge†**
- Thick bull-nosed design offers a refined look
  - Durable construction – heavyweight laminate construction with SBS-modified asphalt



- DuraRidge™ Hip & Ridge†**
- The first hip and ridge shingle with the strength of patented SureNail® technology
  - High-profile and layered design that enhances the roof line
  - A bold, dramatic appearance and vibrant colors that complement TruDefinition® Duration® Series Shingles



- RIZERidge® Hip & Ridge†**
- Foldable design adds dimension
  - Excellent wind performance compared to cut-tab shingles
  - Algae resistant



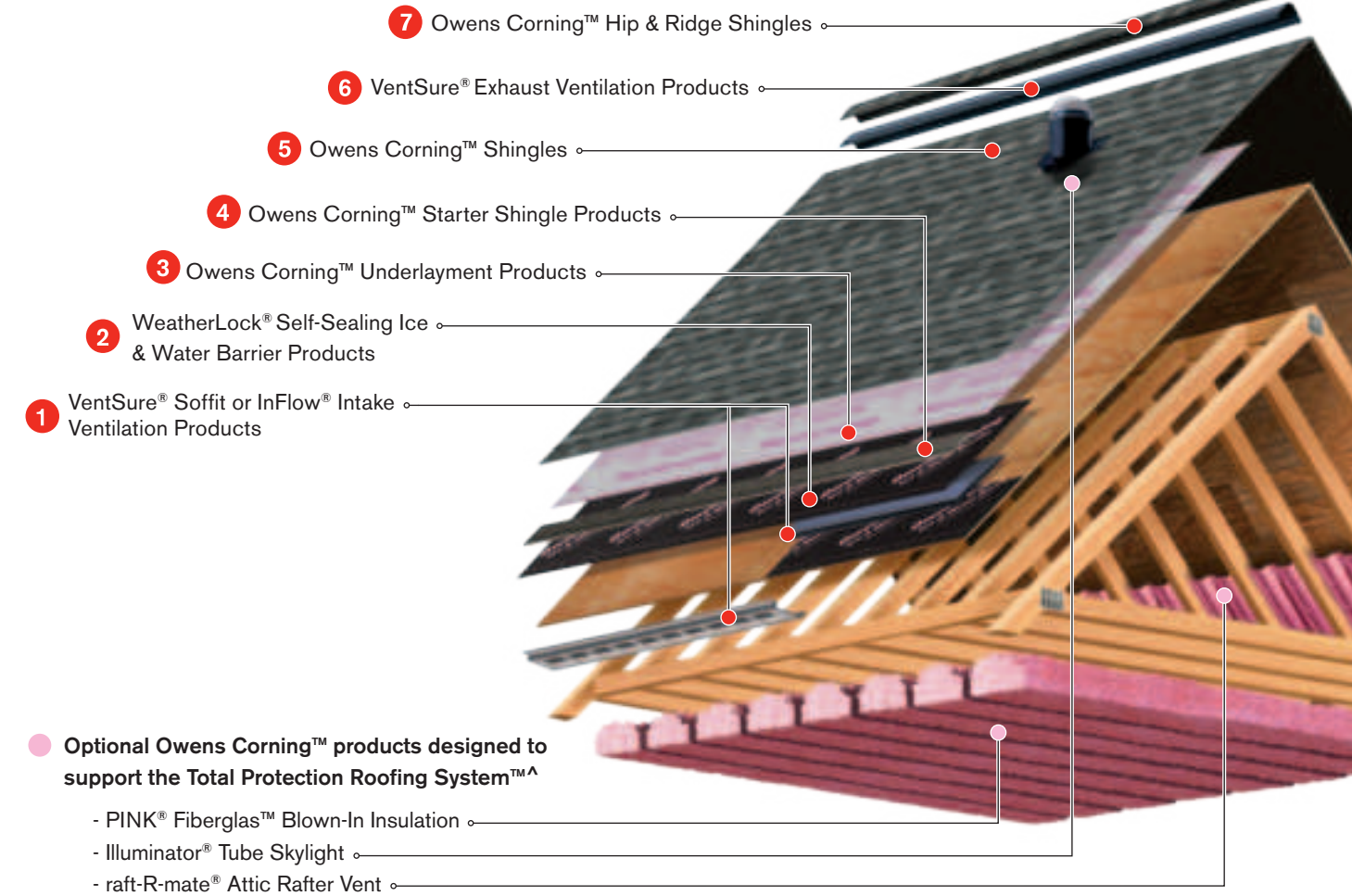
- ProEdge® Hip & Ridge†**
- Shadow line allows for distinction along the ridgeline
  - Manufactured perforations and a larger exposure offer easy installation
  - Pre-cut corners provide attention to detail with no cutting on site

<sup>^</sup>Excludes non-Owens Corning™ roofing products such as flashing, fasteners and wood decking.  
† Available regionally; visit [www.owenscorning.com/roofing](http://www.owenscorning.com/roofing) for details.



## The Total Protection Roofing System™<sup>^</sup> Working together to help protect and enhance the home.

It takes more than just shingles to protect a home. It takes an integrated system of components and layers designed to withstand the forces of nature outside while controlling temperature and humidity inside. The Owens Corning™ Total Protection Roofing System™<sup>^</sup> gives your customers the assurance that all of their Owens Corning™ roofing components are working together to help increase the performance of the roof – and to enhance the comfort and enjoyment of those who live beneath it.



<sup>^</sup>Excludes non-Owens Corning™ roofing products such as flashing, fasteners and wood decking.

For more information, talk to your Owens Corning™ Roofing Area Sales Manager or visit [www.owenscorning.com/roofing](http://www.owenscorning.com/roofing).



**OWENS CORNING ROOFING AND ASPHALT, LLC**  
ONE OWENS CORNING PARKWAY  
TOLEDO, OHIO, USA 43659  
**1-800-GET-PINK®**  
[www.owenscorning.com/roofing](http://www.owenscorning.com/roofing)

Pub. No. 10010505-G. Printed in U.S.A. July 2014. THE PINK PANTHER™ & © 1964–2014 Metro-Goldwyn-Mayer Studios Inc. All Rights Reserved. The color PINK is a registered trademark of Owens Corning. © 2014 Owens Corning. All Rights Reserved.



## Roofing Essentials® Accessories Quick Reference Guide

Build your roofing reputation on Owens Corning quality.





## VentSure® Intake Ventilation Products



### VentSure® InFlow® Vent

- Versatile design for soffittless, open-soffit and traditional roofs
- Excellent protection against wind-driven rain
- Clean, smooth profile



### VentSure® Round Mini Soffit Vents

- Ideal for smaller soffit panels
- Available in 2", 3" & 4" round
- Aluminum construction
- Color: Mill
- Net free vent area: 2" = .637 sq. inches  
3" = 1.36 sq. inches  
4" = 2.43 sq. inches



### VentSure® 8-Foot Continuous Soffit Vent

- Available in 8' lengths
- Color: White
- Net free vent area: 37.47 sq. inches



### VentSure® Aluminum Undereave Intake Vent

- Aluminum construction
- Screened for protection from insects
- Predrilled holes for easy installation
- Colors: Mill and White
- Net free vent area: 4 x 16 = 16.34 sq. inches  
6 x 16 = 27.23 sq. inches  
8 x 16 = 38.12 sq. inches



### raft-R-mate® Attic Rafter Vents

- Assists in the constant flow of fresh air from soffit vent to attic
- Extruded polystyrene construction
- Fits 24" rafters or snap in half for 16" or 12" rafter spacing
- Net free vent area: 22.3 sq. inches



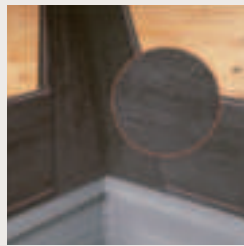
## WeatherLock® Ice & Water Barrier Products



### WeatherLock® G

#### Granulated Self-Sealing Ice & Water Barrier

- Excellent tear resistance to help avoid cracking and breaking during installation



### WeatherLock® Mat

#### Mat-Faced Self-Sealing Ice & Water Barrier

- Patented mat surface reduces slipping, sticking and scuffing



### WeatherLock® Flex

#### Flexible Self-Sealing Ice & Water Barrier†

- The high-performance flexible and pliable solution for multiple applications, including eaves, rakes, valleys, vents, chimneys and skylights



### WeatherLock® Cold Climate

#### Granulated Self-Sealing Ice & Water Barrier†

- Specially engineered for great versatility and improved application in cold weather



### WeatherLock® Specialty Tile and Metal Self-Sealing Ice & Water Barrier†

- Up to 90-day extended UV exposure and waterproofing barrier
- Single-layer polyester walking surface provides a slip-resistant work area
- Excellent surface for foam adhesive set and mechanically fastened roof tile application
- Withstands temperatures up to 260°F



## Underlayment Products



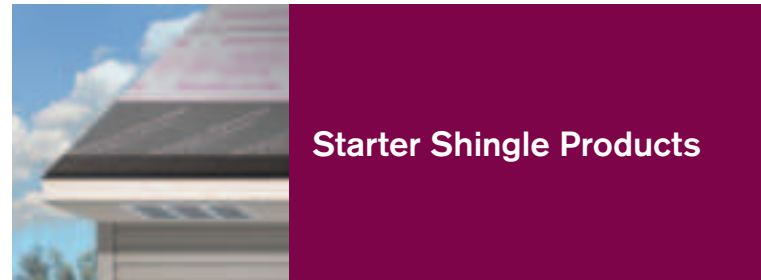
### Deck Defense® High-Performance Roof Underlayment

- Durable synthetic construction with unique bottom surface coating that resists tearing
- Extended exposure for up to 6 months\*\*
- Coverage of 1,000 sq. ft. per roll; 500-sq.-ft. roll available



### Fiberglas™ Reinforced Felt Underlayment

- Reinforced with Fiberglas™ to support flatter, more uniform shingle applications
- Coverage of 400 sq. ft. per roll

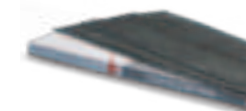


## Starter Shingle Products



### Starter Strip Shingles†

- Packaged two pieces per shingle, 16 shingles per bundle, 100 lineal ft.
- Compatible with any shingle with an exposure of up to 6"



### Starter Strip Plus Shingles†

- Packaged two pieces per shingle, 16 shingles per bundle, 100 lineal ft.
- Extra-wide starter can be used with any shingle that has an exposure of up to 6"



### Starter Shingle Roll†

- Comes in handy individual rolls measuring 7.2" x 33' 4"
- Easy peel-and-stick application



## VentSure® Exhaust Ventilation Products

### VentSure® 4-Foot Strip Heat & Moisture Ridge Vent – 12" Width

- Net free vent area: 20 sq. in. per lineal ft.
- Flat baffle, corrugated ridgeline and interlocking feature for ultimate performance
- Easy-to-handle 4' sections
- Shingle-over width of 12" to accommodate a standard ridge-cap shingle – 15" overall width
- Available with an optional Weather PROtector® Moisture Barrier

### VentSure® 4-Foot Strip Heat & Moisture Ridge Vent with Weather PROtector® Moisture Barrier† – 8" and 10" Widths

- Net free vent area: 18 sq. in. per lineal ft.
- Flat baffle, corrugated ridgeline and interlocking feature for ultimate performance
- Weather PROtector® Moisture Barrier helps protect against weather infiltration
- Easy-to-handle 4' sections

### VentSure® Rigid Roll

- Easy-to-handle 20' rolls; end caps are provided with each roll
- Regional availability in three different widths
- Net free vent area: 12.5 sq. in. per lineal ft.

### VentSure® Solar Attic Exhaust Fan

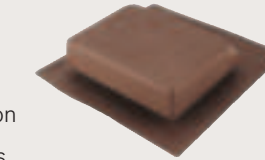
- Integrated thermostat and humidistat
- Optional electric backup
- Available Remote Attic Monitor displays attic conditions and fan operation from any room in your home

### VentSure® Metal Dome with Screen

- Suitable for up to 8:12 pitch
- Protects against rodents and birds
- Galvanized steel construction
- Colors: Mill, W. Grey, Brown, Black
- 25" x 25" base; 15" diameter opening
- Net free vent area: 144 sq. in.

### VentSure® Plastic Slant Back Roof Vent with Screen

- Suitable for up to 12:12 pitch
- Durable polypropylene construction
- Protects against rodents and birds
- Colors: W. Grey, Brown, Black, Cedar, White
- 17" x 18" base; 9" x 9" opening
- Net free vent area: 55 sq. in.



### VentSure® Metal Square Hood Roof Vent, High Stack

- Suitable for up to 12:12 pitch
- Heavy-duty aluminum and steel construction
- Colors: Mill, W. Grey, Brown, Black
- 16.5" x 17.5" base; 8" x 8" opening
- Net free vent area: 51 sq. in.



### VentSure® Metal Slant Back Roof Vent with Exterior Louver

- Suitable for up to 12:12 pitch
- Heavy-duty aluminum and steel construction
- Colors: Mill, W. Grey, Brown, Black
- 16" x 20"; 8" diameter opening
- Net free vent area: 51 sq. in.



### VentSure® Low-Profile Slant Back Vent with Exterior Louver

- Low profile for enhanced aesthetics
- Available with 36" x 28" extended flange
- Galvanized steel construction
- Colors: Black, White, Mill, Brown, Light Gray, Dark Gray
- 32" x 23" base; 11" x 11" opening
- Net free vent area: 72 sq. in.



### VentSure® Internally Braced Premium Turbine

- High-performance aluminum
- Sealed and lubricated ball bearings
- Exceptional wind protection
- Colors: Mill, W. Grey, Brown, Black
- 12" size: 16" base; 12" opening
- 14" size: 18" base; 14" opening



### VentSure® Externally Braced Premium Turbine

- High-performance aluminum
- Sealed and lubricated ball bearings
- Exceptional wind protection
- Colors: Mill, W. Grey, Brown, Black
- 12" size: 16" base; 12" opening



### VentSure® Internally Braced Standard Turbine

- Heavy-duty galvanized construction
- Easy to install
- 12" size: 16" base; 12" opening; colors: Mill, Black, Brown
- 14" size: 18" base; 14" opening; color: Mill



## Illuminator® Tube Skylight



### Illuminator® Tube Skylight

- Evenly distributes natural light into a room without using electricity
- Designed to prevent leaking
- Installs in less than two hours
- Limited Lifetime Warranty\*\* (for as long as you own your home)

† Available regionally; visit [www.owenscorning.com/roofing](http://www.owenscorning.com/roofing) for details.  
\*\* See actual warranty for complete details, limitations and requirements.